

Product information

Lucia is an ever popular crepe weave synthetic panel fabric. It's manufactured from 100% recycled polyester saving virgin raw materials and for a reduced environmental footprint. With a non lustrous appearance, its bold and bright colour palette is designed to complement the Xtreme range for upholstery.

Lucia is certified to the EU Ecolabel.



Technical information

UK

Composition

100% Recycled Polyester.
Non metallic dyestuffs

Width

170cm minimum

Weight

260g/m2 ±5% (440g/lin.m ±5%)

Flammability

BS EN 1021 - 1:2006 (cigarette)
BS EN 1021 - 2:2006 (match)
BS 7176:2007 Low Hazard
BS 476 Part 7 Class 1

Note: Flammability performance is dependent on foam used.

*Light Fastness

6 (ISO 105 - B02:2013)

*Fastness to Rubbing

Wet: 4, Dry: 4 (ISO 105 - X12:2002)

Cleaning

Vacuum regularly. Wipe clean with a damp cloth or shampoo using proprietary upholstery shampoo.

* Tested in accordance with BS 2543:1995/2004. Please note that seam performance is dependent on seam construction and needle and thread type. We recommend that appropriate sewing advice be taken.

Note: Batch to batch variations in shade may occur within commercial tolerances. We reserve the right to alter technical specifications without notice. The Unregistered Design Rights and the Copyright in all designs are the exclusive property of Camira Fabrics Limited.

D

Zusammensetzung

100% Recycelte Polyester.
Nicht schwermetallhaltige Farbstoffe

Breite

170cm nutzbare Breite

Gewicht

260g/m2 ±5% (440g/lfd.M ±5%)

Feuersicherung

BS EN 1021 - 1:2006 (Zigarettestest)
BS EN 1021 - 2:2006 (Streichholztest)
BS 7176:2007 Low Hazard
BS 476 Part 7 Class 1

Bemerkung: Schwerentflammbarkeit hängt von verwendetem Schaum ab.

*Lichtechtheit

6 (ISO 105 - B02:2013)

*Reibechtheit

Nass: 4, Trocken: 4 (ISO 105 - X12:2002)

Reinigung

Regelmässig staubsaugen. Dazu mit einem feuchten Tuch abwischen, oder mit einem speziellen Polsterschaum behandeln.

* Wurde nach BS 2543:1995/2004 getestet. Eine optimale Nahtausreissfestigkeit hängt von der Nahtfahne, der verwendeten Nadel und dem Näh-Garn ab. Wir empfehlen daher Nähversuche durchzuführen.

Wichtig: Handelsübliche Farbabweichungen können auftreten und berechtigen nicht zur Reklamation. Wir behalten uns die Änderung technischer Spezifikationen vor. Die registrierten und nicht registrierten Urheberrechte der Dessinierungen sind ausschliessliches Eigentum der Camira Fabrics Limited.

Contact

UK Head Office: +44 (0)1924 490491

Germany: +49 7031 60 84 30

Scandinavia: +45 32 55 20 01

France/Benelux: +32 56 227 266

USA: +1 317 484 0305

China: + 86 (0) 21 6133 1812

www.camirafabrics.com



ES

Composición

100% Poliéster Reciclado.
Tintes no metálicos

Largeur

170cm mínimo

Poids

260g/m2 ±5% (440g/m.l ±5%)

Inflamabilidad

BS EN 1021 - 1:2006 (cigarette)
BS EN 1021 - 2:2006 (cerilla)
BS 7176:2007 Low Hazard
BS 476 Part 7 Class 1

Condiciones ignifugas dependientes del tipo de foam utilizado.

*Solidez a la luz

6 (ISO 105 - B02:2013)

*Solidez al rozamiento

Húmedo: 4, Seco: 4 (ISO 105 - X12:2002)

Limpieza

Limpiar con aspiradora frecuentemente. Bien lavar con un paño húmedo o con un champú apropiado para tapicería.

* Probado de acuerdo con la norma BS 2543:1995 / 2004. Tenga en cuenta que el rendimiento de la costura depende de la construcción de la costura, además de la aguja y del tipo de rosca. Le recomendamos que se aconsejen para coser la costura.

Nota: las variaciones de lote a lote en la sombra se puede producir dentro de tolerancias comerciales. Nos reservamos el derecho a efectuar modificaciones técnicas sin previo aviso. Los derechos sobre los diseños no registrados y los derechos de autor en todos los diseños son propiedad exclusiva de Camira Fabrics Limited.

camira

style with substance

www.camirafabrics.com

Lucia



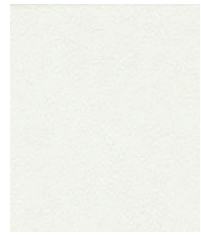
Panels



Environmental



Year guarantee



Adobo
YB165



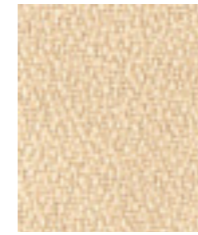
Turtle
YB098



Arcibo
YB099



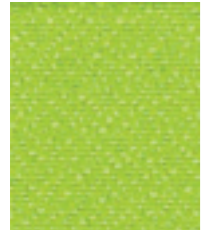
Rum
YB086



Oyster
YB107



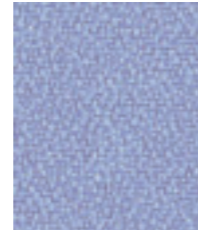
Solano
YB088



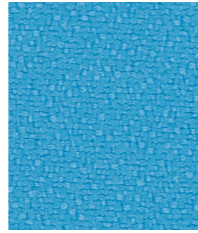
Madura
YB156



Apple
YB096



Bermuda
YB084



Marianna
YB157



Reef
YB085



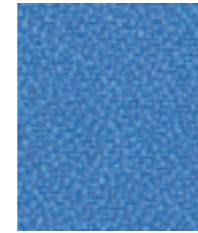
Aruba
YB093



Campeche
YB301



Steel
YB095



Bluebell
YB097



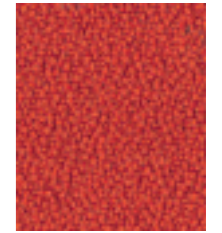
Slip
YB094



Sandstorm
YB302



Tortuga
YB168



Lobster
YB087



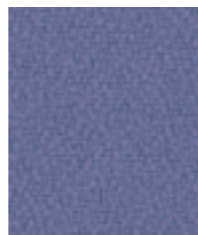
Windjammer
YB047



Montserrat
YB011



Bluefield
YB021



Mauve
YB069



Buru
YB170



Diablo
YB101



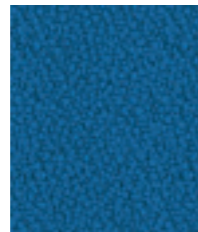
Belize
YB105



Jamaica
YB027



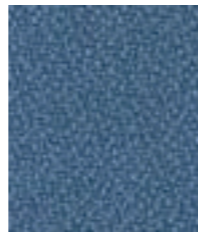
Taboo
YB045



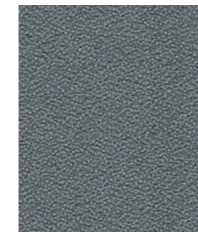
Scuba
YB089



Curacao
YB005



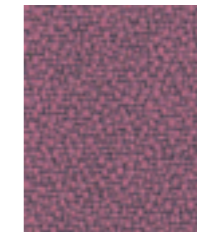
Martinique
YB004



Blizzard
YB108



Tequila
YB038



Bridgetown
YB102



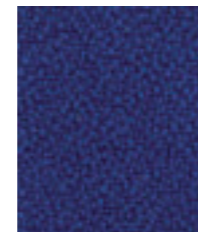
Calypso
YB106



Sombrero
YB046



Costa
YB026



Ocean
YB100



Cayman
YB024



Paseo
YB019



Tarot
YB090



Tobago
YB030



Havana
YB009